

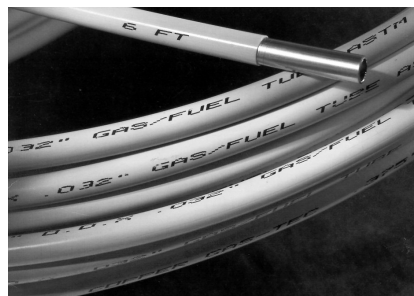
Cuivre Copper ASTM B837	Dia. Ext. Out. Dia.	Pi./Roul. Ft/Coil
749-005	1/8	50'
749-010	3/16	50'
749-015	1/4	50'
749-020	5/16	50'
749-025	3/8	50'
749-038	7/16	50'
749-030	1/2	50'
749-035	5/8	50'
749-204	3/8	100'
749-205	1/2	100'



Aluminium	Dia. Ext. Out. Dia.	Pi./Roul. Ft/Coil
749-050	1/8	50'
749-055	3/16	50'
749-060	1/4	50'
749-065	3/8	50'

Cuivre gainé Coated Copper ASTM B837	Dia. Ext Out. Dia.	Pi./Roul. Ft/Coil
749-231	3/8"	60'
749-232	3/8"	100'
749-233	3/8"	250'
749-235	1/2"	60'
749-236	1/2"	100'
749-237	1/2"	250'
749-240	5/8"	100'
749-241	5/8"	250'
749-242	3/4"	100'

**Cuivre gainé Jaune  
Yellow coated Copper**




**Cuivre gainé ASTM B837  
Type "G" pour installation souterraine.**

**Coated copper tubing ASTM B837 for  
underground type "G" gas installations.**

Connecteurs en acier inoxydable pour appareil au gaz, approuvés CSA pour l'intérieur et l'extérieur.


Stainless steel gas appliance connectors. CSA approved for indoor and outdoor applications.

**Flexible 3/8" O.D.  
Avec Adaptateurs - With Adaptors  
3/8 MPT X 3/8 MPT**




Code	Mod.	Long. Length
755-012	SSC60-12	12"
755-018	SSC60-18	18"
755-024	SSC60-24	24"
755-048	SSC60-48	48"
755-060	SSC60-60	60"

**Flexible 1/2" O.D.  
Avec Adaptateurs - With Adaptors  
1/2 FPT X 1/2 MPT**




Code	Mod.	Long. Length
755-112	SSC42-12	12"
755-118	SSC42-18	18"
755-124	SSC42-24	24"
755-136	SSC42-36	36"
755-148	SSC42-48	48"
755-160	SSC42-60	60"
755-172	SSC42-72	72"

**Flexible 5/8" O.D.  
Avec Adaptateurs - With Adaptors  
3/4 FPT X 3/4 MPT**




Code	Mod.	Long. Length
755-218	SSC21-18	18"
755-224	SSC21-24	24"
755-236	SSC21-36	36"
755-248	SSC21-48	48"
755-260	SSC21-60	60"
755-272	SSC21-72	72"

**ADAPTATEURS - ADAPTORS  
FEM. PIPE X MALE FLARE**



Code	Mod.	A	B
755-022	F38FM	3/8	3/8
755-020	F1238FM	1/2	3/8
755-021	F1234FM	1/2	3/4
755-108	F34FM	3/4	3/4

**ADAPTATEURS - ADAPTORS  
MALE. PIPE X MALE FLARE**



Code	Mod.	A	B
755-023	F38MM	3/8	3/8
755-019	F1238MM	1/2	3/8
755-017	F3458MM	3/4	5/8

## CONDUITS FLEXIBLES À GAZ et ACCESSOIRES FLEXIBLE GAS PIPING & ACCESSORIES

Les **conduits flexibles Gastite** en acier inoxydable ondulé gainé remplacent la tuyauterie de métal noir pour les installations au gaz naturel et propane pour les applications résidentielles, commerciales et industrielles.

- ✓ S'installe 50 à 75% plus rapidement que les tuyaux de métal noir.
- ✓ Assez flexible pour contourner les obstacles.
- ✓ Réduit les risques de fuites ayant moins de joints.
- ✓ Marqué pour identification rapide de conduit à gaz.
- ✓ Compense pour le mouvement du sol et sismique.

***Gastite flexible gas piping** replaces black iron pipe for natural gas and propane in residential, commercial and industrial applications.*

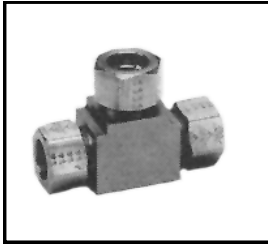
- ✓ *Installs 50 to 75% faster than black iron pipe.*
- ✓ *Flexible enough to bend around obstacles.*
- ✓ *Reduces the potential for leaks because of fewer joints.*
- ✓ *Clearly marked for quick identification as fuel gas piping.*
- ✓ *Compensates for the effects of ground settling and seismic activity.*



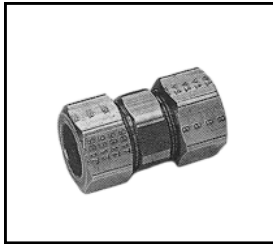
Code	No. de pièce Part number	CSST	NPT	Emballage Packaging
<b>Rouleau Tuyau Flexible</b>		<b>Coil - Flexible Tubing</b>		
756-010	S93-6A4-125	3/8"		125'
756-001	S93-6A4-250	3/8"		250'
756-002	S93-8A4-250	1/2"		250'
756-004	S93-16A4-150	1"		150'



<b>Raccords Femelle Droit</b>		<b>Female Straight Fitting</b>		
756-090	XRFTGFM-8-24	1/2"	1/2"	24
756-091	XRFTGFM-11-8-24	3/4"	1/2"	24
756-092	XRFTGFM-11-24	3/4"	3/4"	24



Raccords en T			Tee Fittings		
Code	No. de pièce Part number	Ligne Run	Ligne Run	Branche Branch	Emball. Pack.
756-151	XRT-11-12	3/4"	3/4"	3/4"	12
756-152	XRT-16-6	1"	1"	1"	6
756-153	XRT-11-8-8-6	3/4"	1/2"	1/2"	6
756-154	XRT-11-11-8-6	3/4"	3/4"	1/2"	6
756-155	XRT-16-11-8	1"	3/4"	1/2"	6
756-156	XRT-16-11-11	1"	3/4"	3/4"	6
756-157	XRT-16-16-11	1"	1"	3/4"	6



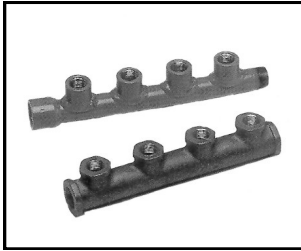
Unions		Couplings	
Code	No. de pièce Part number	CSST	Emball. Pack.
756-165	XRCPL-6-12	3/8"	12
756-167	XRCPL-11-12	3/4"	12
756-168	XRCPL-16-6	1"	6
756-169	XRCPL-20-6	1-1/4"	6



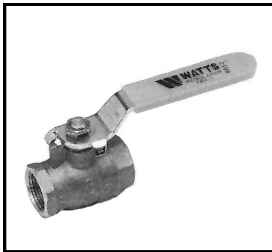
Raccords en Laiton		Brass Mechanical Joint Fittings		
756-100	XRFTG-6-24	3/8"	1/2" NPT	24
756-102	XRFTG-11-24	3/4"	3/4" NPT	24
756-103	XRFTG-16-12	1"	1" NPT	12
756-104	XRFTG-20-6	1-1/4"	1-1/4" NPT	6



Raccords de Terminaison		Termination Fittings		
756-120	XRTRM-6-12	3/8"	1/2"	12
756-121	XRTRM-8-12	1/2"	1/2"	12
756-122	XRTRM-11-12	3/4"	3/4"	12
756-123	XRTRM-16-6	1"	1"	6

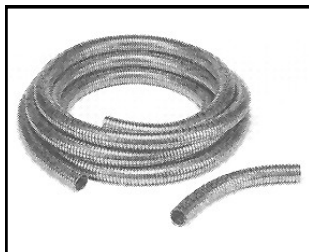


Collecteurs		Multiport Manifolds	
Code	No. pièce Part nr	4 Ports	Montage / Port Layout
756-170	111596-08	Acier recouvert <i>Coated steel</i>	3/4" F x 1/2" Ports x 3/4" M



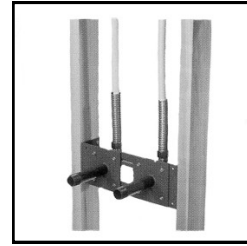
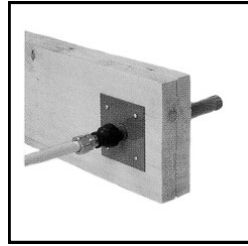
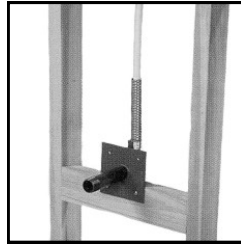
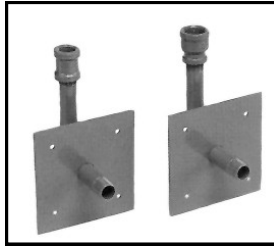
**Vannes à Bille  
Ball Valves**

Code	Dim. NPT Size
742-109	3/8"
742-110	1/2"
742-111	3/4"
742-112	1"

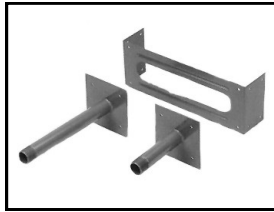


Tuyau Protecteur en Acier		Protective Steel Conduit	
Code	No. de pièce Part number	Dimensions	Emballage Packaging
756-601	Floppy 16	1" od x 1/2" id	50' rl / coil
756-602	Floppy 20	1-1/4" od x 3/4" id	25' rl / coil
756-603	Floppy 24	1-1/2" od x 1" id	25' rl / coil
756-604	Floppy 28	1-3/4" od x 1-1/4" id	25' rl / coil

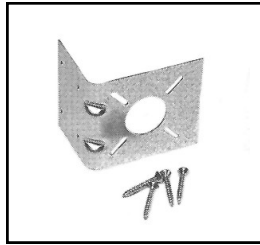
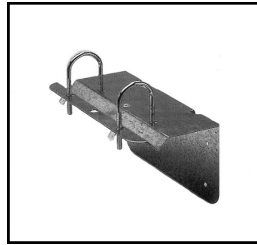
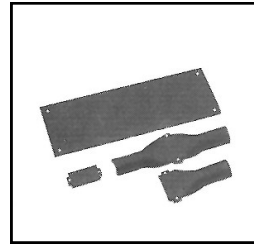
Les conduits d'acier sont utilisés lorsque les plaques d'acier ne peuvent pas être installées facilement.  
*Steel conduit is used to provide additional protection where striker plates can not be easily installed.*



Stubout


**Embouts Modulaires**
**Modular Stub Systems**

Code	No. de pièce Part number	Description	Dimensions
756-020	AP-STUB-8-10	Sortie appareil Appliance stub-out	1/2" M x 1/2" F
756-021	AP-STUB-11-10	Sortie appareil Appliance stub-out	1/2" M x 3/4" F
756-022	3/4x6STUB-10	Droit / Straight	3/4" M x 6" L
756-023	3/4x12STUB-10	Droit / Straight	3/4" M x 12" L
756-024	1x6STUB-10	Droit / Straight	1" M x 6" L
756-025	1x12STUB-10	Droit / Straight	1" M x 12" L
756-026	STUB-BRACE	Support Stub bracket	Tous les modèles Fits all


**LBRACE-1**

**MBACE-1**

**TFM-XX**

**MSTRAPS**

Code	No. de pièce Part number	Description	Dimensions
756-140	LBRACE-1	Support pour raccord <i>Termination outlet mounting bracket</i>	3/8" - 1"
756-143	MBACE-1	Support pour collecteur <i>Manifold support</i>	Tous / All
756-500	TFM-205-25	Plaque protectrice <i>Full striker plate</i>	3" x 12"
756-501	TFM-201-50	Demi-plaque protectrice <i>Half striker plate</i>	3" x 7"
756-502	TFM-204-100	Quart de plaque <i>Quarter striker plate</i>	3" x 2"
756-503	TFM-210	Plaque 617 <i>617 Striker plate</i>	6" x 17"
756-620	MSTRAPS-6	Tube 3/8"	
756-030	SIL-TAPE	Ruban silicone <i>Self-bonding silicone tape</i>	1" x .015" x 36'